

# 2023 Logan City Cup - Medium (right lane)



Oil Pattern Distance: **40 Feet**  
 Forward Oil Total: **14.3 mL**  
 Forward Boards Crossed: **286 Boards**

Reverse Brush Drop: **35 Feet**  
 Reverse Oil Total: **14.3 mL**  
 Reverse Boards Crossed: **286 Boards**

Oil Per Board: **50 uL**  
 Volume Oil Total: **28.6 mL**  
 Total Boards Crossed: **572 Boards**

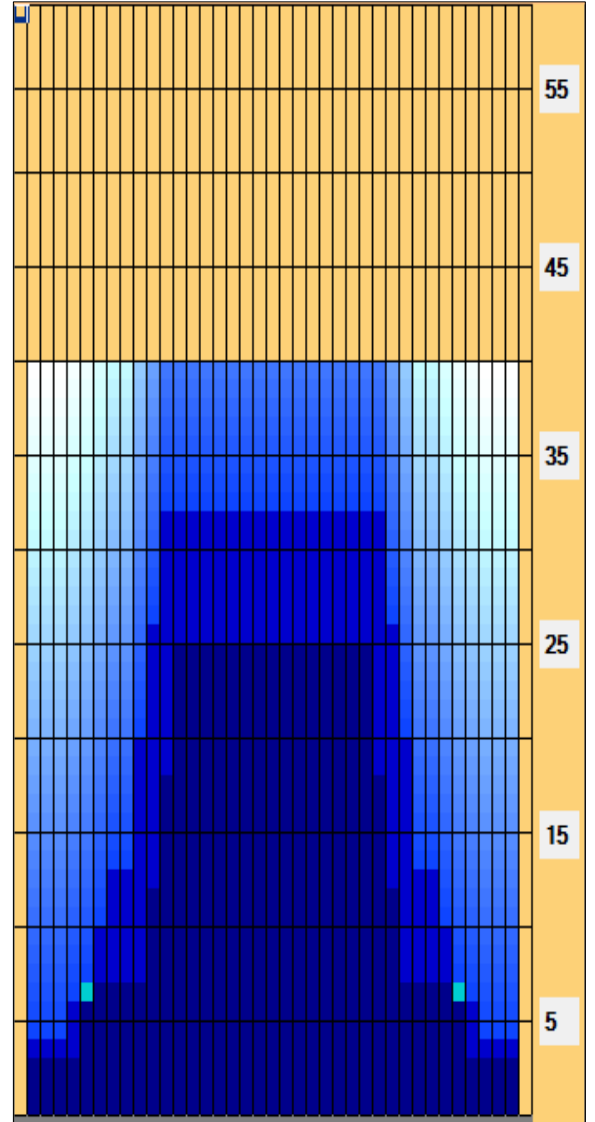
	Start	Stop	Loads	Speed	Crossed	Start	End	Feet	T.Oil
1	2L	2R	3	14	111	0.0	3.9	3.9	5550
2	6L	6R	2	14	58	3.9	7.8	3.9	2900
3	11L	11R	2	18	38	7.8	12.9	5.1	1900
4	12L	12R	2	18	34	12.9	18.0	5.1	1700
5	13L	13R	3	18	45	18.0	25.6	7.6	2250
6	2L	2R	0	26	0	25.6	40.0	14.4	0

	Start	Stop	Loads	Speed	Crossed	Start	End	Feet	T.Oil
1	2L	2R	0	30	0	40.0	32.0	-8.0	0
2	12L	12R	2	22	34	32.0	25.8	-6.2	1700
3	11L	11R	2	22	38	25.8	19.6	-6.2	1900
4	10L	10R	2	22	42	19.6	13.4	-6.2	2100
5	8L	8R	2	14	50	13.4	9.5	-3.9	2500
6	7L	7R	2	14	54	9.5	5.6	-3.9	2700
7	5L	5R	1	10	31	5.6	4.2	-1.4	1550
8	2L	2R	1	10	37	4.2	2.8	-1.4	1850
9	2L	2R	0	10	0	2.8	0.0	-2.8	0

Conditioner:  
Type In or Select One

TransferType:  
Type In or Select One

- Forward
- Reverse
- Combined
- Buff



Lane Machine - Kustodian Ion Model B  
 Lane Oil - Ice  
 Cleaner - Defense CX4

Item	3L-7L:18L-18R	8L-12L:18L-18R	13L-17L:18L-18R	18L-18R:17R-13R	18L-18R:12R-8R	18L-18R:7R-3R
Description	Outside Track:Middle	Middle Track:Middle	Inside Track:Middle	Middle: Inside Track	Middle:Middle Track	Middle:Outside Track
Track Zone Ratio	4.14	1.64	1	1	1.64	4.14

