



# 2022

## SA Seniors

### Classic

Salisbury Bowland

28<sup>th</sup> & 29<sup>th</sup> May 2022

**\$240**  
Entry Fee

**BOWLAND**  
Salisbury



**Mawson Lakes**  
HOTEL & FUNCTION CENTRE



**tenpin**  
results

Online entries and results at  
[tenpinresults.com.au](http://tenpinresults.com.au)



TBA Ranked Event: A22/00147

## Welcome

Welcome to the SA Seniors Classic, to be held on the 28th and 29th of May 2022, at Salisbury Bowland, 2 Clayson Road, Salisbury East.



## Rules and Regulations

1. **COVID RULES** Strictly no Contact (High Fives, handshakes and team huddles are strictly prohibited during this event). Please limit the number of spectators at this event. If the tournament is cancelled due to COVID19 a full refund of money paid will be organised.
2. The SA Seniors Classic is a scratch event open to all TBA Registered Bowlers who must be 50 years of age or older in the year of competition.
3. This is a TBA Nationally Ranked Tournament and all TBA Rules and Regulations apply. This includes the requirement for bowlers to provide evidence of their 2022 TBA Registered Players Membership at check-in.
4. TBA senior ranking points will apply to this tournament for bowlers that are Silver members prior to bowling this event.
5. All nominations are to be made by visiting [www.tenpinresults.com.au](http://www.tenpinresults.com.au) Login, follow the Tabs to SA Seniors Classic, pick your squad and pay a deposit to secure your spot.
6. No bowler is permitted to have more than one entry in this event.
7. Bowlers must wear neat and acceptable attire. Trousers, skirts or shorts must be tailored
8. The Tournament Director reserves the right to check any bowler's equipment at any stage during the tournament. Any equipment found to breach TBA regulations will result in that bowler being disqualified from the tournament, forfeiting any prize money
9. No bowler will be permitted to smoke or consume alcohol whilst participating in the tournament
10. Any appeals or protests must be lodged with the Tournament Director within 30 minutes of the alleged infringement
11. Any matters not covered in the conditions above will be referred to the Tournament Director, whose decision will be final
12. If a tie occurs for 1st place equal champions will be declared and the 1<sup>st</sup> and 2<sup>nd</sup> place prize fund will be combined and divided between both bowlers.
13. Entries will be accepted until squads are full.
14. No refunds will be issued for bowlers withdrawing from the tournament after play has commenced.
15. Refund of Entry Fees – Should a refund of a player's entry fee be required because of an event cancellation or approved refund by the tournament director, the full amount paid will be transferred to the player's portal as a credit amount. The player then has two options
  - Use the total credit amount for any other tournament that is using online entries,
  - Request a Cash-out of the total credit amount less the processing fee. ( 3%)



Online Entries and live results at [tenpinresults.com.au](http://tenpinresults.com.au)

tenpin  
results



**Mawson Lakes**  
HOTEL & FUNCTION CENTRE



## Tournament Format & Schedule

### Format:

- All participants will bowl 16 games over two days of competition.
- There will be 2 squads (A and B) with a maximum of 44 participants per squad.
- 8 games are to be bowled on day 1 and 8 games are to be bowled on Day 2.
- After the 16 games of competition, the male and female with the highest pinfall will be declared the 2022 SA Seniors Classic Champions

### Saturday 28<sup>th</sup> May 2022

- A squad check-in closes 8.30am
- 8.35am Briefing
- 8.45am A squad – Lanes on for Warm Up
- 8.55am A squad commence 8 game block
- 1.00pm Lanes washed and re-oiled
- B squad check-in closes 1.30pm
- 1.35pm Briefing
- 2.00pm B squad to bowl 8 games
- 6.00pm Approximate finish

### Sunday 29<sup>th</sup> May 2022

- 7.50am B Squad - Lanes on for Warm Up
- 8.00am B squad commence 8 game block
- 12.00 noon Lanes washed and re-oiled
- 1.00pm A squad – Lanes on for Warm Up
- 1.10pm A squad commence 8 game block
- 5.10pm Approximate finish
- 5.30pm Presentation

## Tournament Committee

Lyn Alexander – 0431 241 415 Trevor Noble – 0419 826 080

Isaac Elliott 0416 487 815

## Tournament Sponsors

Bowland Salisbury

Mawson Lakes Hotel & Function Centre

See the great deals that the hotel is offering to bowlers competing in the Seniors Classic at the end of this form.



**Mawson Lakes**  
HOTEL & FUNCTION CENTRE



## Prize Fund – Seniors

Both male and female winners receive prize money, plus a trophy and paid entry into the 2023 SA Seniors Classic. Prize fund is based on 80 entries and will be adjusted if there are insufficient entries.

	Men	Women
1 <sup>st</sup>	\$1100	\$900
2 <sup>nd</sup>	\$800	\$600
3 <sup>rd</sup>	\$650	\$400
4 <sup>th</sup>	\$500	\$310
5 <sup>th</sup>	\$400	\$270
6 <sup>th</sup>	\$340	\$260
7 <sup>th</sup>	\$320	\$250
8 <sup>th</sup>	\$310	\$240
9 <sup>th</sup>	\$300	
10 <sup>th</sup>	\$290	
11 <sup>th</sup>	\$280	
12 <sup>th</sup>	\$270	
13 <sup>th</sup>	\$260	
14 <sup>th</sup>	\$250	

## Prize Fund – Grand Seniors

Prize Fund for Grand Seniors will be paid to non-cashing participants. Grand Seniors must be 60 years of age or older in the year of competition.

	Men	Women
1 <sup>st</sup>	\$170	\$170
2 <sup>nd</sup>	\$150	\$150
3 <sup>rd</sup>	\$130	\$130
4 <sup>th</sup>	\$110	

## Lane Awards

At the end of competition, there will be a \$20 prize awarded to the bowler who bowls the highest game on each pair of lanes. This prize has been kindly donated by Mawson Lakes Hotel

## Previous Event Champions

Year	Women's Champion	Men's Champion	Year	Women's Champion	Men's Champion
2003	Jeanette Baker	Barry Morgan	2004	Jeanette Baker	Greig Lyas
2005	Jeanette Baker	John Sullivan	2006	Jeanette Baker	Barry Morgan
2007	Jeanette Baker	Frosty Gorostiaga	2008	Jeanette Baker	Chris Benson
2009	Jeanette Baker	Rob Zikman	2010	Jeanette Baker	Kevin Webb
2011	Jeanette Baker	Kevin Webb	2012	Heather Robertson	Mick Talevski
2013	Jeanette Baker	Kevin Webb	2014	Jeanette Baker	Warren Stewart
2015	Jeanette Baker	Shaun Cummings	2016	Julie Harrison	Steve Lenton
2017	Tracy Crisp	Geoff Elliott	2018	Mary Dodd	Rob Kaluci
2019	Cheryl Womack	Rob Kaluci	2020	Cancelled due to COVID19	
2021	Jo Babic	Steve Lenton	2022		

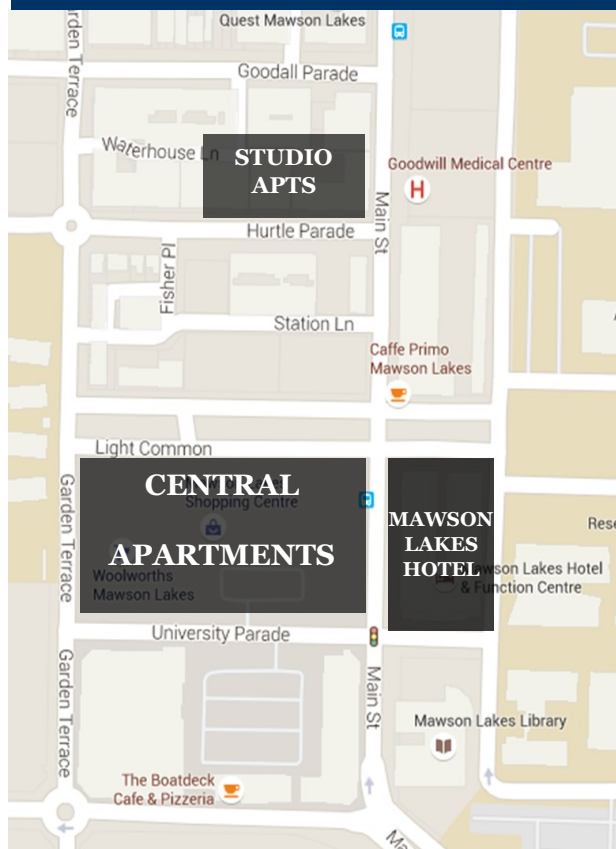


Online Entries and live results at [tenpinresults.com.au](https://tenpinresults.com.au)

tenpin  
results

# Mawson Lakes Hotel & Function Centre

## Hotel Information



### Hotel Information

- Hotel and serviced apartment accommodation
- Check in 2.00pm Check out 10.00am
- Complimentary self car parking (subject to availability)
- Breakfast/Lunch/Dinner available 7 days a week
- Sports Bar and Gaming facilities

### Accommodation Rates—PLEASE QUOTE CODE 'TENP' WHEN MAKING RESERVATION

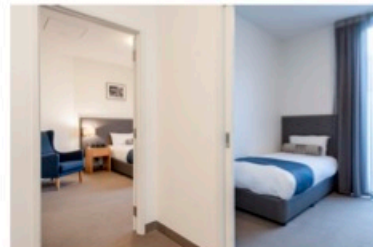
- Deluxe Queen Rooms from \$105.00 per night
- Central One-Bedroom Apartment from \$125.00 per night
- Central Two -Bedroom Apartment from \$175.00 per night

*Subject to availability , rates for other room types available upon request.*

# Mawson Lakes Hotel & Function Centre

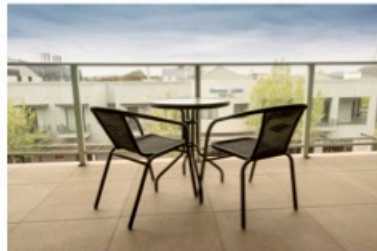
**Hotel Rooms**— Located on level one of the main building, both stair and lift access, public car parking

- **Deluxe Hotel Room:** Queen bed, tea & coffee making facilities.
- **One Bedroom Suite:** Queen bed, separate living area with kitchenette, laundry facilities. Optional sofa bed for additional bedding
- **Two Bedroom Suite**—Main bedroom queen bed. Second bedroom queen bed or 2x singles. Separate living area with kitchenette, laundry facilities. Optional sofa bed for additional bedding.



**Central Apartments**— Located adjacent to the Hotel on Main Street. Both stair and lift access, secure off-street car parking.

- **One Bedroom Apartment:** Queen bed. Fully self contained with open plan living and dining, full kitchen, laundry facilities, balcony. Optional sofa bed for additional bedding.
- **Two Bedroom Apartment:** Main bedroom king bed or 2 x single beds. Second bedroom queen bed. Fully self contained with open plan living and dining, full kitchen, laundry facilities, balcony



**Studios**— Located approximately 150 metres from the Hotel on Hurtle Parade. Stair access ONLY, secure off-street car parking.

- **Studio One Bedroom Apartment:** Main bedroom queen bed. Open plan living and self contained with kitchen and laundry facilities.
- **Studio Two Bedroom:** Main bedroom queen bed. Second bedroom queen bed or 2x single beds. Small sitting area with tea & coffee making facilities

